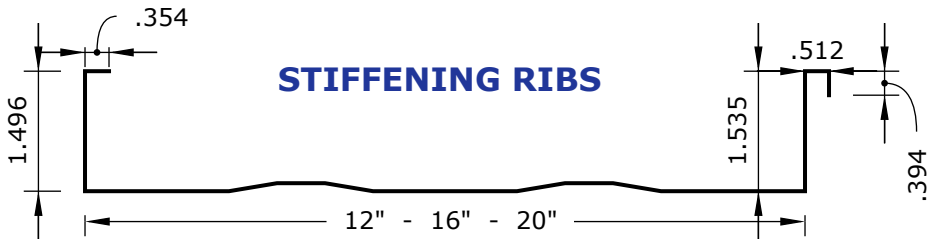
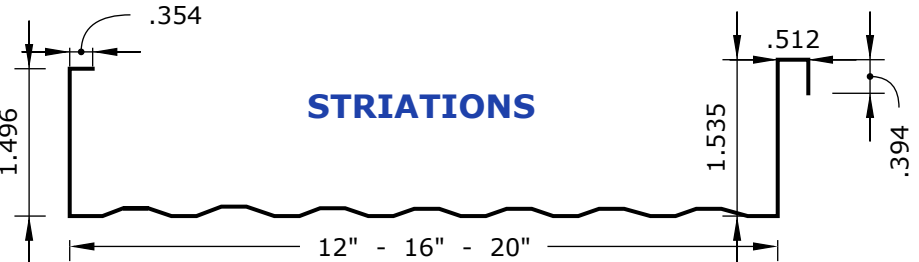
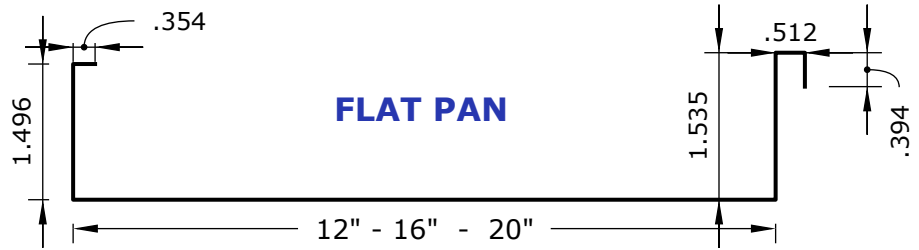


1.5" MECHANICALLY SEAMED

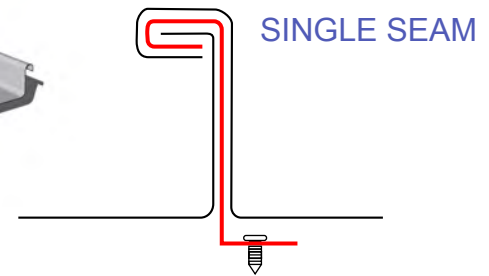
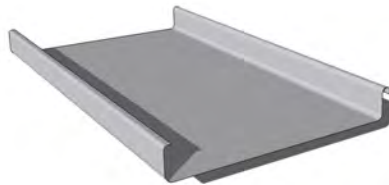
PRODUCT DESCRIPTION

1.5" Mechanically Seamed is made in a range of gauges, metals, and finishes starting in a 26gauge. It is a completely concealed fastener style of standing seam metal roofing that uses a clip system preventing penetrations to the panel, allowing for maximum expansion contraction. The panel can be single or double seamed; a double seam making the panel not only more resistance to weather activities, but also suitable for low slope applications.



Profile Detail

Fastening System	Concealed Fastener
Application	Roofing & Siding
Panel Coverage	12" - 20" (custom 24")
Rib Height	1.5" (25.4mm)
Minimum Slope	1/12
Max Shipping	42'



Available Gauges

Galvalume	Grade 33	26ga, 24ga, 22ga
Aluminum		0.040

Additional offerings may be available upon customer request. Standard production lead times are 2-4 weeks.

